

Compact Power. Game Bold.

ASUS Innovations

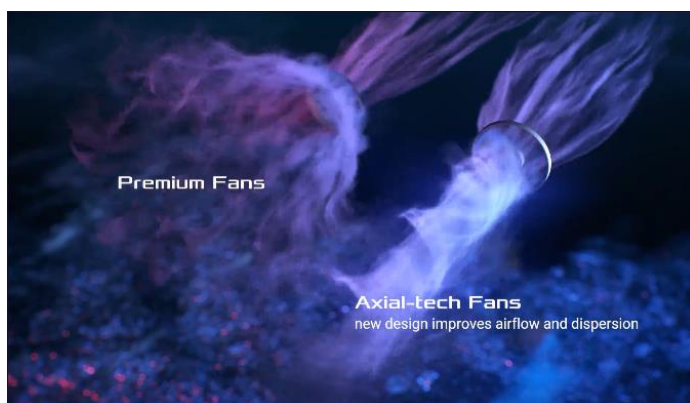
NV Features

- **Powered by NVIDIA DLSS3**, ultra-efficient Ada Lovelace arch, and full ray tracing.
- **4th Generation Tensor Cores:** Up to 4x performance with DLSS 3 vs. brute-force rendering.
- **3rd Generation RT Cores:** Up to 2x ray tracing performance.
- **Compatible with the NVIDIA GeForce SFF-Ready Program** for small-form-factor builds.



Axial-tech Fan Design

Three tried-and-true Axial-tech fans feature a smaller hub that facilitates longer blades and a barrier ring to increase downward air pressure for lower temperatures, less noise, and higher performance.



2.5-slot Design

A carefully designed layout for the shroud, heatsink and heatpipe lets the three Axial-tech fans leverage chassis side-panel ventilation and deliver thermal performance normally associated with larger cooling systems.



Dual Ball Fan Bearings

Different bearing types have unique pros and cons. Ball bearings excel at durability and can last up to twice as long as sleeve bearing designs.



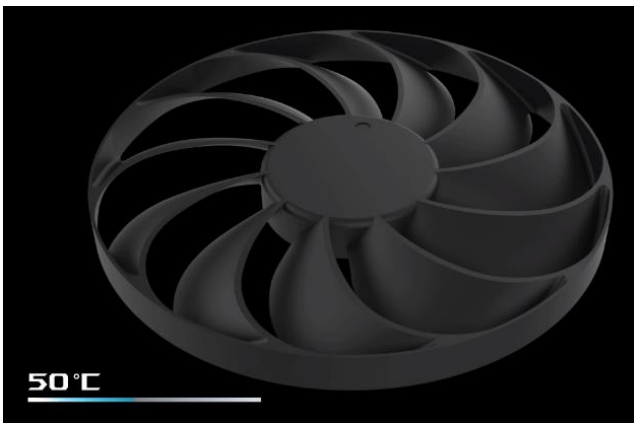
Protective Backplate

The PCB is reinforced by a backplate that adds structural rigidity, helping to prevent flex and protect components and trace pathways from damage.



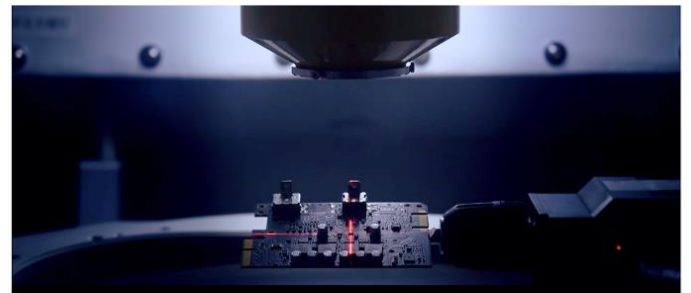
0dB Technology

To eliminate unnecessary noise, a stop mode halts all fans when the GPU temp falls below 50 degrees and power consumption is low.



Auto-Extreme Technology

Fully automated manufacturing for improved reliability and lower environmental impact.



Stainless Steel Bracket

The mounting bracket for the PRIME GeForce RTX 4070 SUPER features grade 304 stainless steel, chosen for its strength and high resistance to corrosion.



Software

Hardware and software come together to let you fully customize your experience and get the most out of your graphics card. GPU Tweak III allows for hardware tweaking and monitoring, and QuantumCloud utilizes your spare GPU computing power to generate passive income.



ASUS Features

OC
Edition

OC edition

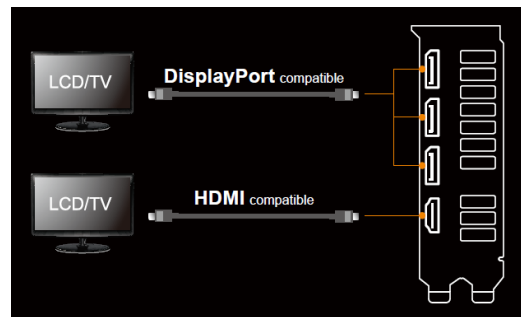
2550 MHz GPU boost clock in OC mode for outstanding gaming experience.

12 GDDR6X
Memory

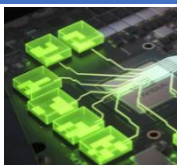
12GB GDDR6X Memory

On-board memory for the best gaming experience & the best resolution.

I/O Specifications



NV Features



Resizable BAR

Resizable BAR is an advanced PCI Express feature that enables the CPU to access the entire GPU frame buffer at once, improving performance in many games.



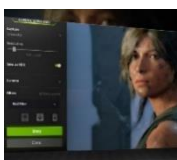
Game Ready Drivers

GeForce Game Ready Drivers deliver the best experience for your favorite games. They're finely tuned in collaboration with developers and extensively tested across thousands of hardware configurations for maximum performance and reliability.



GeForce Experience

Capture and share videos, screenshots, and live streams with friends. Keep your drivers up to date and optimize your game settings. GeForce Experience lets you do it all. It's the essential companion to your GeForce graphics card.



NVIDIA G-SYNC

Get smooth, tear-free gameplay at high refresh rates, plus HDR and more. This is the ultimate gaming display and the go-to equipment for enthusiast gamers.



NVIDIA Ansel

Turn your screenshots into art with this powerful in-game photo mode that captures 360, HDR, and super-resolution photos.



Virtual Reality

The highest performance graphics deliver the smoothest, most immersive VR experiences.

Specifications

Model Name	PRIME-RTX4070S-O12G
Graphics Engine	NVIDIA® GeForce RTX™ 4070 SUPER
CUDA Cores	7168
OpenGL®	OpenGL® 4.6
Engine Clock	OC mode : 2550 MHz (Boost Clock) Default mode : 2520 MHz (Boost Clock)
Memory Interface	192-bit
Video Memory	12GB GDDR6X
Memory Clock	21 Gbps
Power Connector	1 x 16-pin
I/O	1 x Native HDMI 2.1a 3 x Native DisplayPort 1.4a
HDCP Compliant	HDCP 2.3
Digital Max. Resolution	7680 x 4320
Maximum Display Support	4
NVLink/Crossfire Support	N/A
Recommended PSU	750W
Bus Standard	PCIe 4.0
Package Contents	1 x Speedsetup Manual 1 x Thank you card 1 x Adapter Cable (1 to 2)
Software Bundled	ASUS GPU Tweak III & GeForce Game Ready Driver & Studio Driver: please download all software from the support site.
Slot	2.5 slot
Dimension	
Card Size (mm/inch)	269 x 120 x 50 mm 10.59 x 4.72 x 1.97 inch
Color Box (mm)	405 x 233 x 88.5 mm
Weight	
Single Card (KG)	0.802 KG
Product Weight (with packing) (KG)	1.5 KG
Note	<p>* Our wattage recommendation is based on a fully overclocked GPU and CPU system configuration. For a more tailored suggestion, please use the “Choose By Wattage” feature on our PSU product page: https://rog.asus.com/event/PSU/ASUS-Power-Supply-Units/index.html</p> <p>* All specifications are subject to change without notice. Please check with your supplier for exact offers. Products may not be available in all markets. If you do not use the latest and current specifications of ASUS products, you shall be liable for all loss and damage claimed by third party to ASUS based on false advertising or any other issues caused from using false specifications of ASUS products.</p>



